

ArtfulBits Image Upload Column

for Microsoft® SharePoint®



Install Guide

System Requirements	1
Preparation for Installation.....	2
Installation	2
License Management.....	6
Activating / Deactivating Feature	8
Product Updates	9
Uninstallation / Repairing	10
Remarks	10

System Requirements

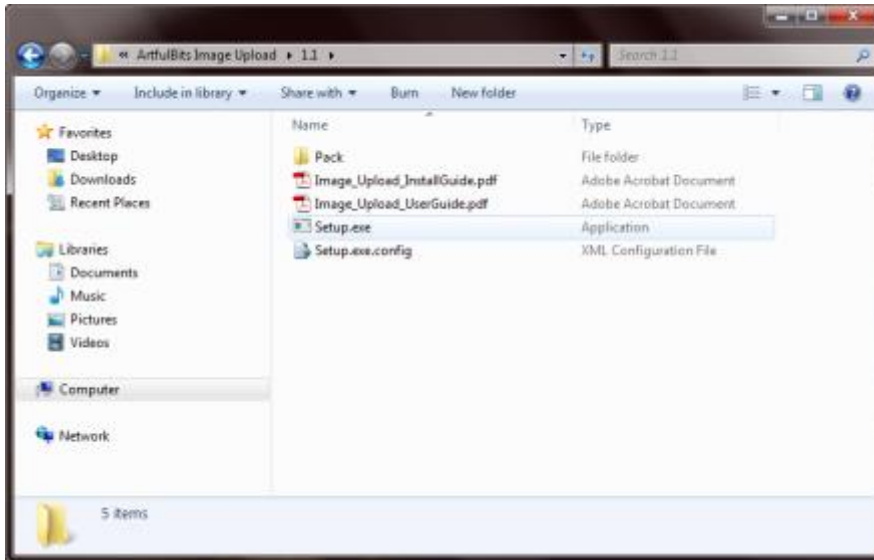
Operating Systems:	<p>Microsoft Windows Server 2008, 2008 R2 Microsoft Windows Server 2012, 2012 R2 Microsoft Windows Server 2016 Microsoft Windows Server 2019</p>
Servers:	<p>SharePoint Release:</p> <ul style="list-style-type: none"> > SharePoint Foundation 2010 or SharePoint Server 2010 > SharePoint Foundation 2013 or SharePoint Server 2013 > SharePoint Server 2016 and SharePoint Enterprise 2016 > SharePoint Server 2019 and SharePoint Enterprise 2019 <p><i>Note: This product is not compatible with SPS 2003 and WSS v2</i></p>
Browser:	<p>Microsoft Internet Explorer 7+ is recommended for Advanced Administration features</p> <p>Also compatible with:</p> <ul style="list-style-type: none"> > Mozilla Firefox 2.0+ > Opera 9.5+ > Apple Safari 3.0+ > Google Chrome 2.0+

Preparation for Installation

Before installation, please, check that your target server meets Image Upload Column system requirements (see above). Also, it is recommended to install ArtfulBits License Manager before (if it is not installed).

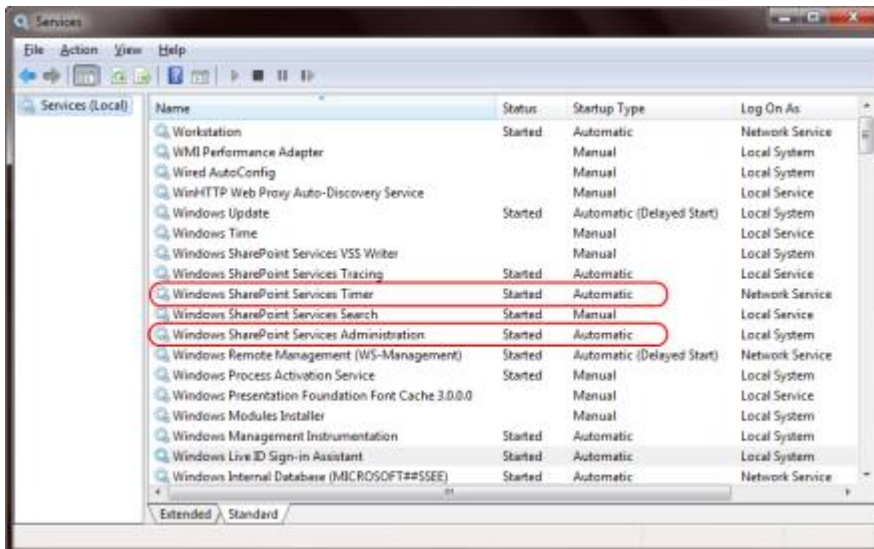
Installation

Download Image Upload Column installation package from ArtfulBits website, unpack the file, and run "**Setup.exe**".



Note: You must be the SharePoint Farm Administrator and following MS Windows services should be running:

- Windows SharePoint Services Administration
- Windows SharePoint Services Timer



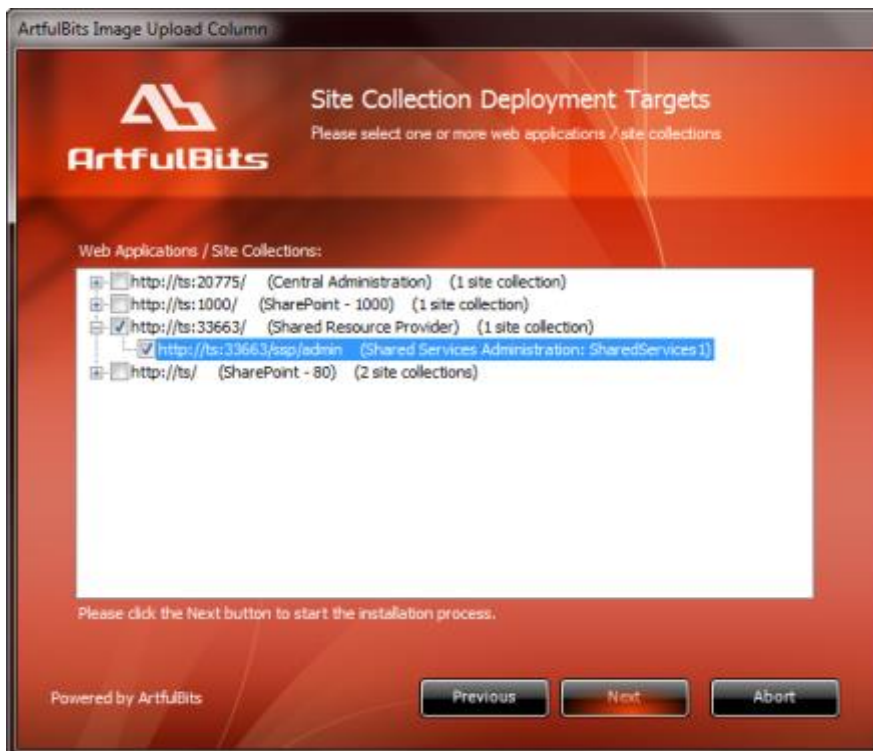
After system check is finished, click "Next".



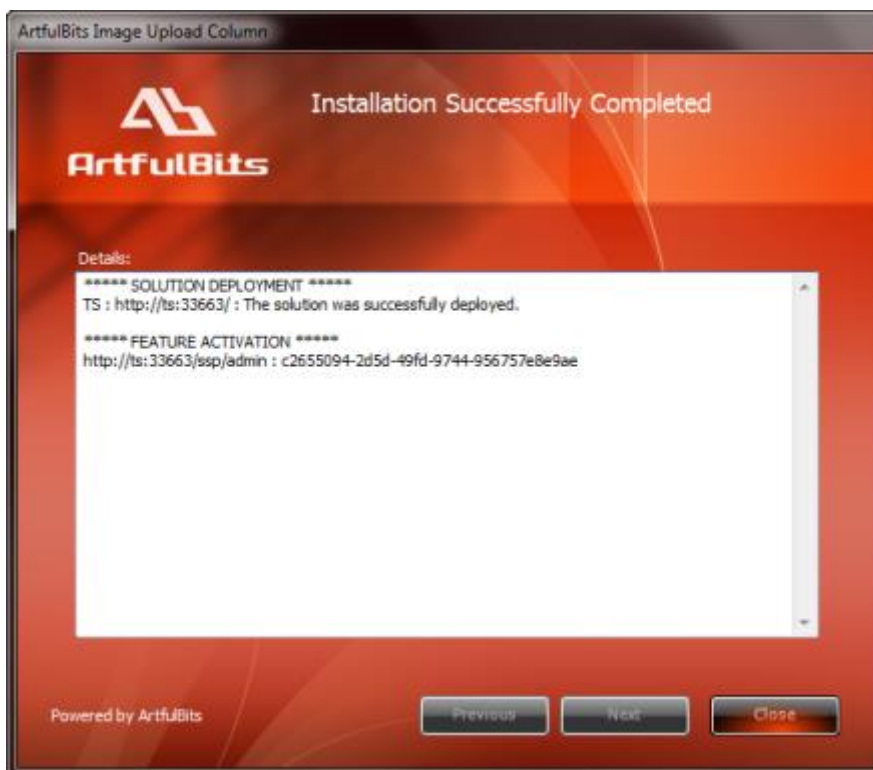
After reading License Agreement, click "Accept" and go to next step.



Select one or more web applications and click "Next".



Wait for install to succeed, click "Next" to check deployment status details.



License Management

Image Upload Column uses **Per-Farm Licensing Model** (each license is bound to single SharePoint Farm ID). For more details about licensing models please visit <https://www.sharepoint-artfulbits.com/Blog/Post/development-vs-full-license>

Product works in unlicensed mode for three days from the moment of installation. In this mode all the product features are unlocked same way as with trial license. After these three days either trial license or full license should be entered for product to function.

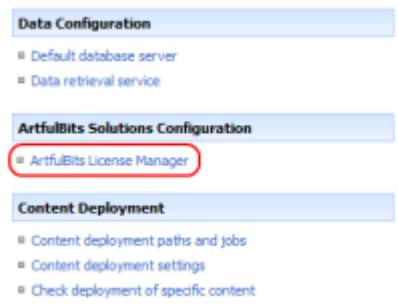

To get a Trial license navigate to:

<https://www.sharepoint-artfulbits.com/Products/image-upload>








You can buy the product by the following link:

<https://www.bluesnap.com/jsp/buynow.jsp?contractId=3182746>

After ArtfulBits License Manager is installed, go to the SharePoint Central Administration page:

SharePoint 2007	SharePoint 2010
<p>Choose "Operations". Click on "ArtfulBits License Manager":</p> 	<p>Click on "ArtfulBits License Manager":</p> 

This page shows all ArtfulBits products and their license statuses.

Product	Edition	License Status
 ArtfulBits Cascaded Lookup Column v1.38	Standard	Full license
 ArtfulBits Category Column v1.6	Evaluation	No license
 ArtfulBits Column Data Adapter v1.0	Evaluation	Trial license (Expiring in 13 day(s))
 ArtfulBits Column Permissions v1.0	Standard	Full license
 ArtfulBits Cross-Site Lookup Column v1.7	Evaluation	Trial license (Expiring in 18 day(s))
 ArtfulBits Discussion Column v1.54	Standard	Full license
 ArtfulBits Image Upload Column v1.64	Evaluation	No license

Click on product name to view license details.

Product	Artfulbits Image Upload Column v1.64 Provides functionality to select the picture from the local hard drives uploads and stores it within list.
Product Edition	Evaluation Please visit following link for product editions comparison chart.
License Status	No license (You can use product for 3 more day(s)) Note: in trial or unlicensed mode all product features are available for evaluation. After trial period license should be purchased which will determine product edition and available feature set. Please visit following link for product editions comparison chart.
License Operations	Farm ID: <input type="text" value="b46ace34-9360-4e30-9406-45837fa4367a"/> Enter License Copy Farm ID to Clipboard Get free trial license Go to purchase page

[Go Back](#)

If product is not licensed you can click "Enter License" link and enter license key (trial or full) into textbox. For upgrading product edition click "Convert License" and enter new license of target product edition.

License Operations	Farm ID: <input type="text" value="b46ace34-9360-4e30-9406-45837fa4367a"/> Enter License Copy Farm ID to Clipboard Get free trial license Go to purchase page
	<pre>19E4FC3F3B6D0E7E4809554C000F09B83BA64C032AE2978E0D98E5EF857C8D460BA717503BD23 1090F00737038CE18B812D879633BE7980C995DCFA9525B2E83D7477DA743F790E50C326F3D2030 5CFEB63812CF762CB140BCAD09E2A0DA23C83B28F9812865B2D5A82E5CC37D4ED5BFD5EB7EBF88 ED41852FFCDED5C6340FAD074CC0848887F28EDD1CF74C60F50968C2D35C5683A1901E8D1D955A 04FCDDA18ED4F662A91A48E8C71F0CA57CB4278235B8577B47C2D8412F8C9DC6D9CA11919B13F 6D982B7D503981D49C74C8969E6CBEFE05CBC76CD52B8473C44587F1FD29495A914835B2CF12E91 39046E87337E5FE2F784D754D7C26EC9F9D66A</pre>
	Activate Cancel

Pressing "Activate" button will verify the key and in case of verification success license status will be updated.

Product Edition	Standard Please visit following link for product editions comparison chart.
License Status	Full license Note: in trial or unlicensed mode all product features are available for evaluation. After trial period license should be purchased which will determine product edition and available feature set. Please visit following link for product editions comparison chart.

Note: in trial or unlicensed mode **all** product features are available for evaluation. This way you will be able to try each and every feature available in the product line which will give you good understanding of what feature set will be necessary for you and it will be easier to come up with the decision which product edition should be purchased. After trial period expiration full license should be purchased which will determine product edition and available (unlocked) feature set.

Special link informing about product expiration is shown in SharePoint pages, where ArtfulBits component is used if product is using trial license or such license is "Expired" or no license is provided at all. Clicking on this link will redirect to product license status details page.



Activating / Deactivating Feature

Click "Site Actions" menu in the root site of one site collection, then click "Site Settings":



Click "Site collection features" link in Site Settings page:




Site Collection Administration

- Search settings
- Search scopes
- Search keywords
- Recycle bin
- Site collection features
- Site hierarchy
- Portal site connection
- Site collection audit settings
- Site collection policies

Site Collection Administration

- Search settings
- Search scopes
- Search keywords
- FAST Search keywords
- FAST Search site promotion and demotion
- FAST Search user context
- Recycle bin
- Site collection features
- Site hierarchy
- Site collection navigation
- Site collection audit settings
- Audit log reports
- Portal site connection
- Site collection policies
- Content type publishing
- Variations
- Variation labels
- Translatable columns
- Variation logs
- Suggested Content Browser Locations
- SharePoint Designer Settings
- Visual Upgrade
- Help settings

In SharePoint Site collection feature list, activate Image Upload Column feature (if deactivated).

	ArtfulBits Follow-Up Column Provides ability to setup deadline date like Outlook follow-up feature, includes several flags with dates, such as Today, Tomorrow, This Week, Next Week or associate with custom dates.	<input type="button" value="Activate"/>
	ArtfulBits Image Upload Column Provides functionality to select the picture from the local hard drives, uploads stores it within list.	<input type="button" value="Deactivate"/> <input style="border: 2px solid red;" type="button" value="Activate"/>
	ArtfulBits Parent Selector Column Provides new functionalities to default SharePoint lookup, allows selecting parent record (records) from current list.	<input type="button" value="Activate"/>

Product Updates

Process of updating ArtfulBits Image Upload Column is pretty straightforward - just download latest [installation](#) package and execute **Setup.exe** from it. After system check completes, select an "Upgrade" option and then follow setup wizard instructions.



ArtfulBits Image Upload Column

ArtfulBits Upgrade or Remove
Please select the operation you wish to perform.

Another version of ArtfulBits Image Upload Column is already installed. What would you like to do?

Upgrade
Upgrades ArtfulBits Image Upload Column on all frontend web servers in the SharePoint farm.

Remove
Retracts the solution from all web applications and deletes it from the SharePoint solution store.

Please click the Next button to start the selected operation.

Powered by ArtfulBits

Uninstallation / Repairing

Execute **Setup.exe** from your installation package. On the Repair and Remove section, select Remove radio button and click "Next", the Image Upload Column will be uninstalled. Or select "Repair" - to repair the Image Upload Column.



Remarks

Information in this document may be outdated. Please, visit <https://sharepoint-artfulbits.com> for the latest product version.