

ArtfulBits Password Reset Web Part

for Microsoft® SharePoint®



User Guide

Overview	1
Feature List.....	2
Why ArtfulBits Password Reset Web Part?.....	2
How to Use.....	2
Password Reset Process Flow	2
Password Reset Global Settings.....	4
Setting up Password Reset on an Anonymous Access SharePoint Site	8
Enable Anonymous Access.....	8
Adding Web Part to a Page	10
Release Notes.....	12
See Also	13
Remarks	15

Overview

ArtfulBits Password Reset Web Part allows users to reset their forgotten passwords from within the SharePoint environment without administrator intervention. If user does not remember his password and wants to log in SharePoint site, he can reset his forgotten password via web part interface, passing through the various degrees of protection, included security questions and / or email confirmation. New password can be shown on page, or sent to user email, or even user can type new password manually.

ArtfulBits Password Reset Web Part

Email address:

Feature List

Feature	SharePoint 2010	SharePoint 2013	SharePoint 2016	SharePoint 2019
Multiple providers support including Active Directory services, SQL membership provider and others	✓	✓	✓	✓
Configurable account required fields (Username and/or user email)	✓	✓	✓	✓
Ability to set security questions for AD password reset	✓	✓	✓	✓
Password reset request confirmation	✓	✓	✓	✓
Allows users to type new password manually	✓	✓	✓	✓
Ability to auto generate new password and deliver it online or via email	✓	✓	✓	✓
Password changed email notification	✓	✓	✓	✓
Customizable email notifications	✓	✓	✓	✓
Language pack support (desired localization could be added by request)	✓	✓	✓	✓

Why ArtfulBits Password Reset Web Part?

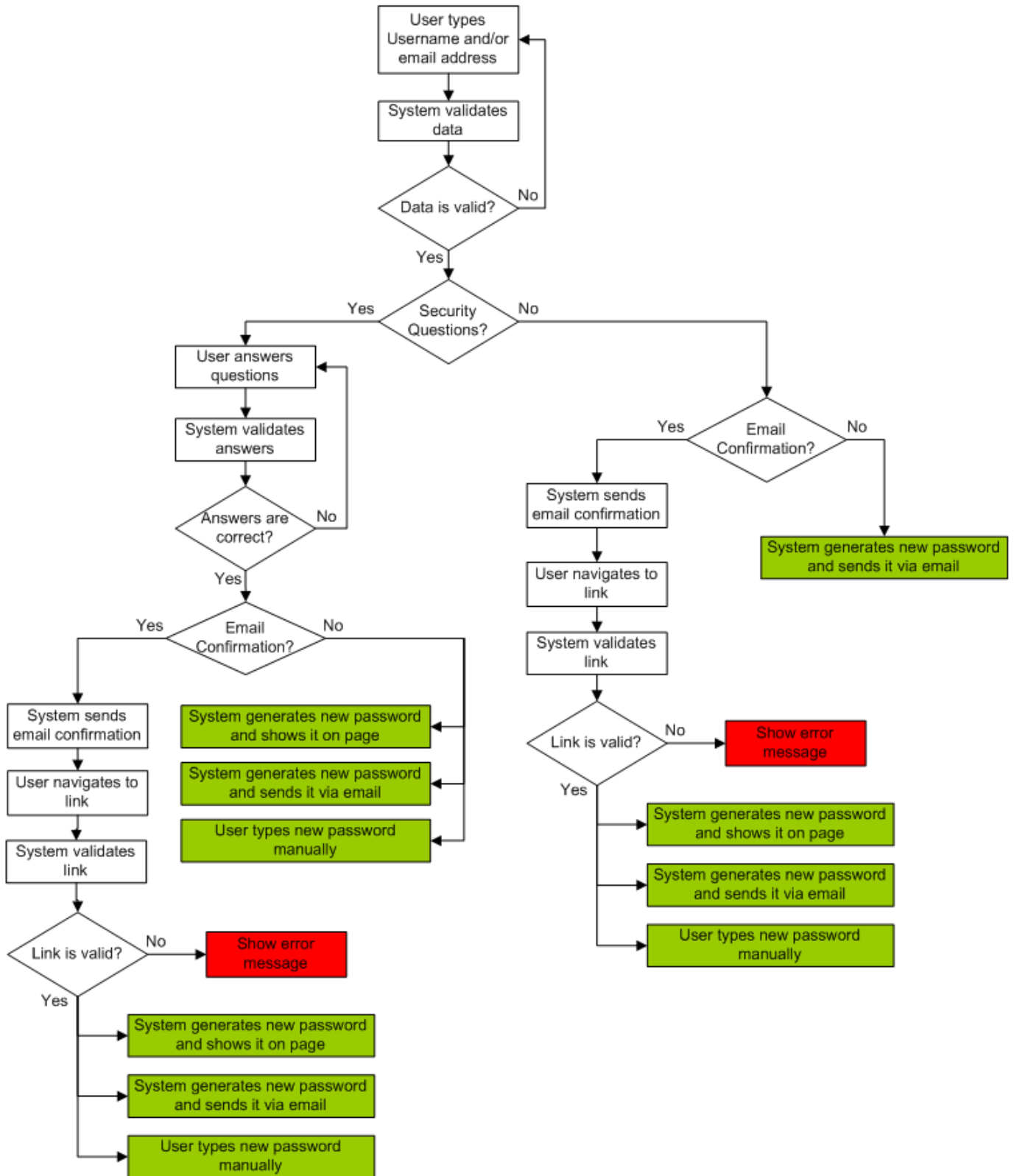
With importance of login security growing and password requirements increasing, it is becoming easier for users to forget their new passwords. With the ArtfulBits Password Reset Web Part, users now have the ability to submit their own password reset requests through SharePoint, no longer requiring IT Administrations assistance. After user identification, he can either type new password manually via web part interface or system will auto generate new one and show it on a page or send via email depending on web part configuration.

Used in combination with ArtfulBits Password Change and Password Expiration Web Part it can substantially improve users' password management.

How to Use

Password Reset Process Flow

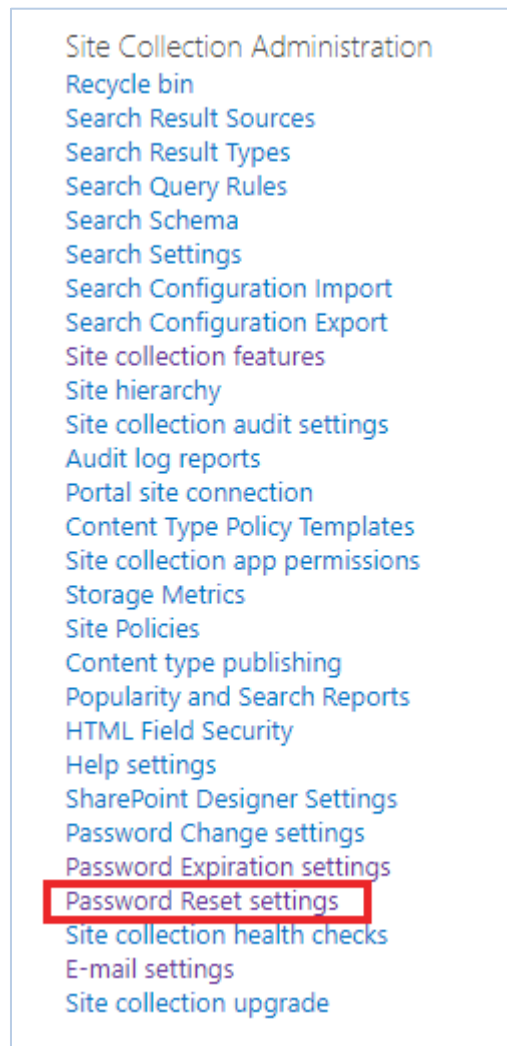
Password Reset supports difference verification methods: using security questions and/or email confirmation. The following diagram provided below shows password reset process flow.



Password Reset Global Settings

Before using Password Reset Web Part it is required to activate "ArtfulBits Password Reset Web Part" site collection feature and specify Password Reset global settings for each Web application Zone.

Navigate to Password Reset Settings page to specify password reset global settings (Site Actions → Site Settings → Site Collection Administration → Password Reset settings):



In Authentication Type section, you can see current Web application Zone (for which password reset is configured), Web application URL and authentication type for this zone.

Authentication Type	Zone Default
	URL http://srv01sp2016-2
	Claims Authentication Types <input checked="" type="radio"/> Window Authentication
Enable/Disable Password Reset	Allow password reset for this site zone? <input checked="" type="radio"/> Yes <input type="radio"/> No

To enable password reset for current zone, check "Yes" under "Allow password reset for this zone?". If "No" is selected, then Password Reset Web Part will not be visible for this zone.

If current zone authentication uses Active Directory users (Windows authentication or FBA with LDAP membership provider), then it is required to provide administrative account, that has a right to reset AD users passwords.

Administrative Account Provide Administrative Account that has right to reset Active Directory user password.	Domain: <input type="text" value="sharepointbox"/>
	Account Name: <input type="text" value="sharepointbox\kskvarko"/>
	Password: <input type="password" value="*****"/>

If you want to use security questions to validate AD user identity, check "Enable Security Questions" and specify at least one security question. You should set question displayed in the Web Part and define the field in Active Directory that the user's answer is confirmed against.

Security Questions Check Enable Security Questions to use security questions to verify user identity. Note: This flag is auto determined for FBA membership providers (except LDAP membership provider), and depends on provider's RequiresQuestionAndAnswer option.	<input checked="" type="checkbox"/> Enable Security Questions
	Security Question #1: <input type="text" value="What is your last name?"/>
	AD custom field name for answer to Security Question #1: <input type="text" value="SN"/>
	Security Question #2: <input type="text"/>
	AD custom field name for answer to Security Question #2: <input type="text"/>
	Security Question #3: <input type="text"/>
	AD custom field name for answer to Security Question #3: <input type="text"/>

Note: This flag is auto determined for FBA membership providers (except LDAP membership provider), and depends on provider's "RequiresQuestionAndAnswer" property. If "RequiresQuestionAndAnswer" is set to true, then user should answer a password question for password reset.

In order to send confirmation email before password reset, you should check "Enable Email Confirmation" option. You can change default message displayed for user in web part and confirmation email Subject and Body. You can use the following key templates in email fields: \$USERNAME\$, \$USEREMAIL\$, \$CONFIRMLINK\$.

The screenshot shows a configuration window titled "Security Questions". On the left, there is a note: "Note: This flag is auto determined for FBA membership providers (except LDAP membership provider), and depends on provider's RequiresQuestionAndAnswer option." On the right, there is a checked checkbox "Enable Security Questions". Below it are three sections for configuring security questions. Each section includes a text input for the question, a text input for the AD custom field name for the answer, and a small icon in the bottom right corner of the question input field. The first question is "What is your last name?" with the AD custom field name "SN".

Note: If FBA membership providers (except LDAP membership provider) has "RequiresQuestionAndAnswer" equal to True and "EnablePasswordRetrival" is equal to False, then this option will be disabled in this case.

With \$CONFIRMLINK\$ you are able to provide a link to Password Reset page automatically. This key is using default web application URL for constructing Password Reset page. However, if your network configuration is such that the default web application URL and URL that the users use are different, than you may find that using \$CONFIRMLINK\$ "as it is" won't provide the correct URL address. In this case, you have an option to replace default web application URL called by \$CONFIRMLINK\$ with any custom URL by filling the corresponding value in the "Alternative URL" text box:

The screenshot shows a configuration window titled "Additional Settings". On the left, there is a note: "Provide additional settings." On the right, there is a checkbox "Unlock account automatically" which is unchecked. Below it is the "Email From:" field with a text input containing "noreply@company.com". Below that is an "Example:" section showing "noreply@company.com" and "SharePoint Notification <notify@company.com>". Below that is the "Alternative Url:" field with a text input containing "http://ALTERNATIVE.COM/". Below the input is the text "This URL will use instead of default the Web Application URL." At the bottom right, there are three buttons: "Reset Settings", "OK", and "Cancel".

Password reset allows to generate new password automatically or to type new one manually. In "Password Receive Type" section check appropriated option for it:

- "Generate new password automatically and show it on page" – new password will be generated automatically and will be shown via Web Part. \$USERNAME\$, \$USEREMAIL\$, \$NEWPASSWORD\$ template keys are supported as well.
- "Generate new password automatically and send it via email" – new password will be generated automatically and email will be sent to user email account with new password. \$USERNAME\$, \$USEREMAIL\$, \$NEWPASSWORD\$ template keys can be used in email subject and body.
- "Enable to type new password manually" – users will be able to type new password and confirm it manually via Web Part interface.

Password Receive Type
Specify password reset mode and method the user should receive it.

Generate new password automatically and show it on page
Your new password is: \$NEWPASSWORD\$

Generate new password automatically and send it via email
A new password has been generated and email has been sent to \$USEREMAIL\$ with new password.

Email Subject:
New Password

Email Body:
<p>Greetings!</p>
<p>Your new password is: \$NEWPASSWORD\$</p>
<p>You cannot reply to this email.<p>

Email Bcc:

Enable to type new password manually

In order to avoid any security issues, you can check "Send email notification on password changed". As soon as new password is generated or user types new one manually, system will send email notification to user email address just inform that his password has been changed.

Password Changed Email Notification
Specify whether email should be sent when password is changed.

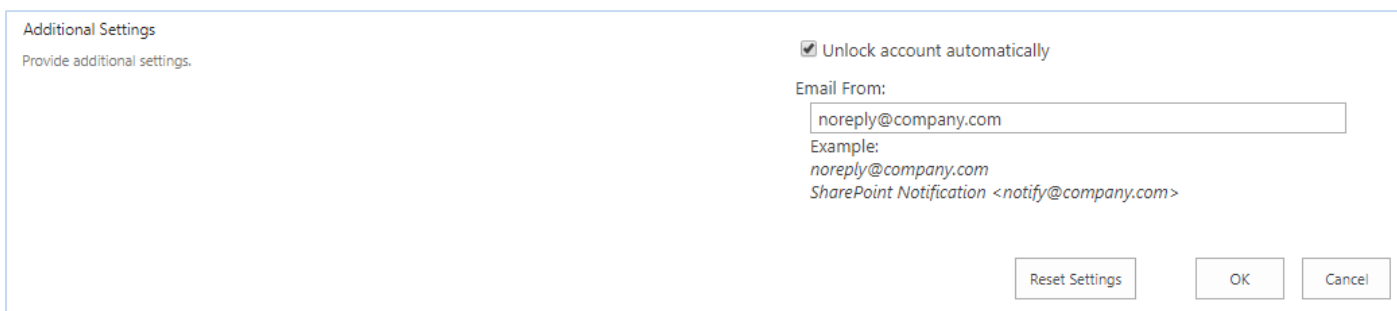
Send email notification on password changed

Email Subject:
Password Changed

Email Body:
<p>Greetings!</p>
<p>Your password has been changed. If you did not change your password, please contact administrator immediately to avoid any security issues.</p>
<p>You cannot reply to this email.<p>

Email Bcc:

If user account is locked due to AD password policy violations (for ex. an incorrect password was entered three times when user logins), user can be unlocked automatically. For it, you should check "Unlock account automatically" option in "Additional Settings" section.

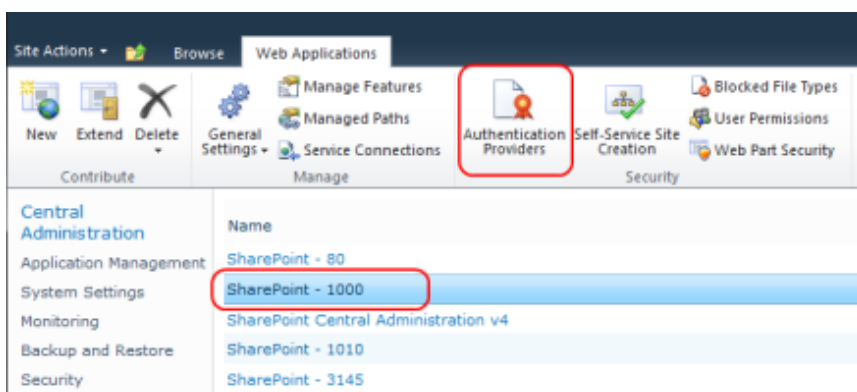


Setting up Password Reset on an Anonymous Access SharePoint Site

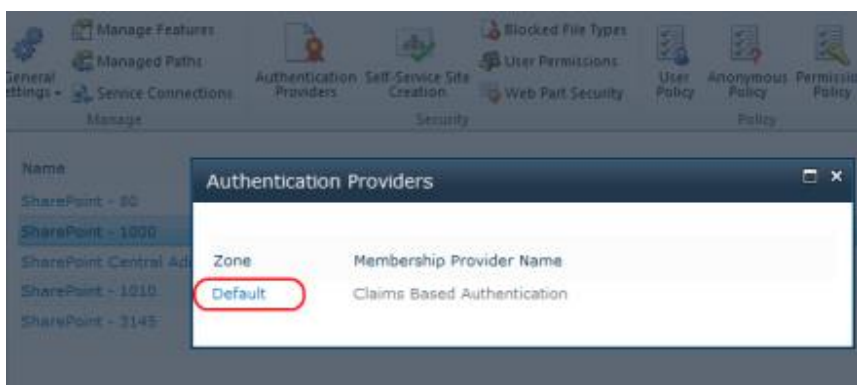
Enable Anonymous Access

In order to access to the Web page for the users, that forgot their passwords, you should enable anonymous access for SharePoint site.

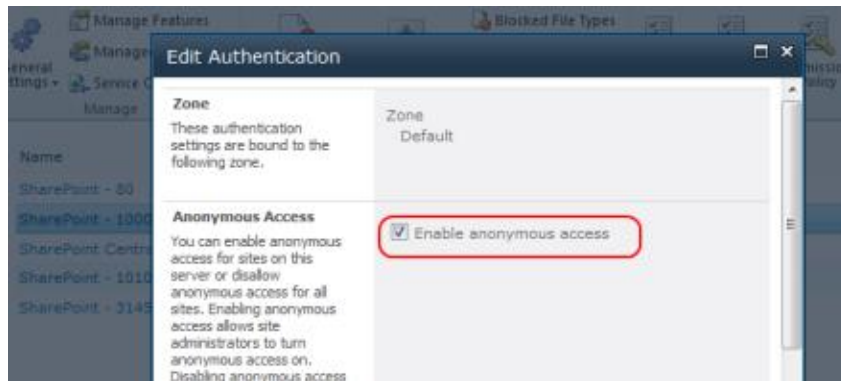
Open SharePoint Central Administration → Application Management → select target Web Application → Authentication Providers:



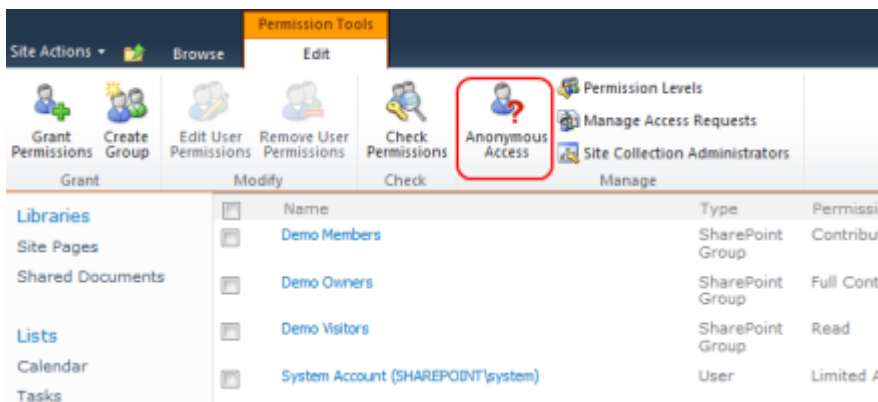
Choose authentication provider:



In Anonymous Access section, check "Enable anonymous access":

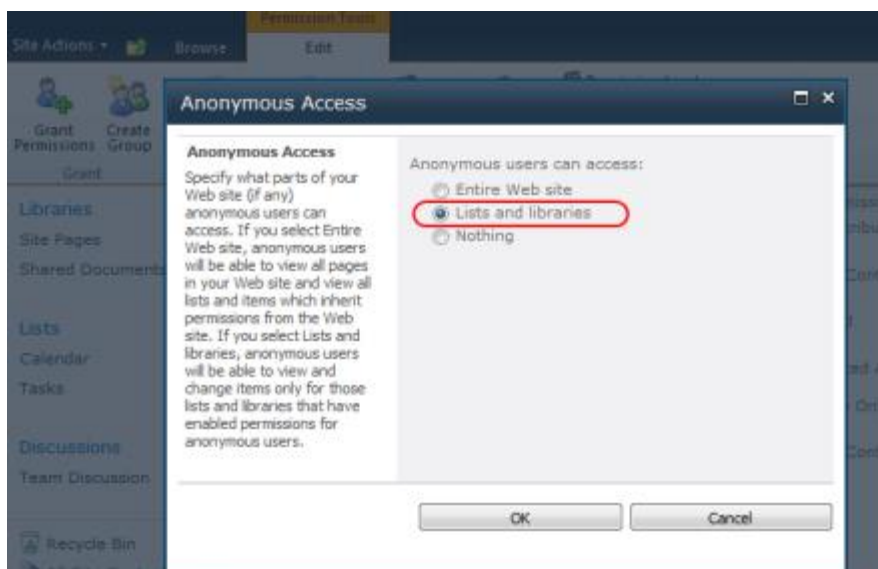


After you have enabled anonymous access to Web application, you should enable it for your SharePoint site collections that needs password reset. For that, open SharePoint site and go to Anonymous Access settings page (Site Actions → Site Permissions → Anonymous Access).



In "Anonymous Access" section, specify the parts of SharePoint site that anonymous users can access. If you select "Entire Web site", anonymous users will be able to view all pages in your Web site and view all lists and items which inherit permissions from the Web site. If you select "Lists and libraries", anonymous users will be able to access pages and view items only for those lists and libraries that have enabled permissions for anonymous users.

In order to use ArtfulBits Password Reset web part it is enough to select "List and libraries" option under

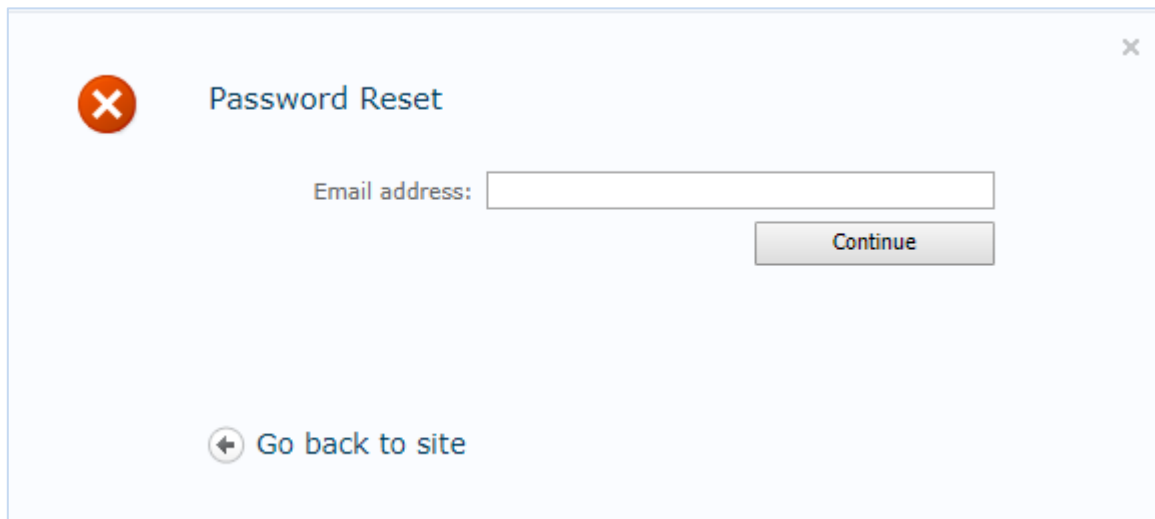


"Anonymous users can access" box.

Adding Web Part to a Page

After anonymous access to site is configured, you can add Password Reset Web Part to your custom page or use built-in ArtfulBits Password Reset page. This page is included in Password Reset package, and you can find it by following URL: [http://\[sitecollectionurl\]/ layouts/ArtfulBits.WebParts/PasswordReset/PasswordReset.aspx](http://[sitecollectionurl]/layouts/ArtfulBits.WebParts/PasswordReset/PasswordReset.aspx)

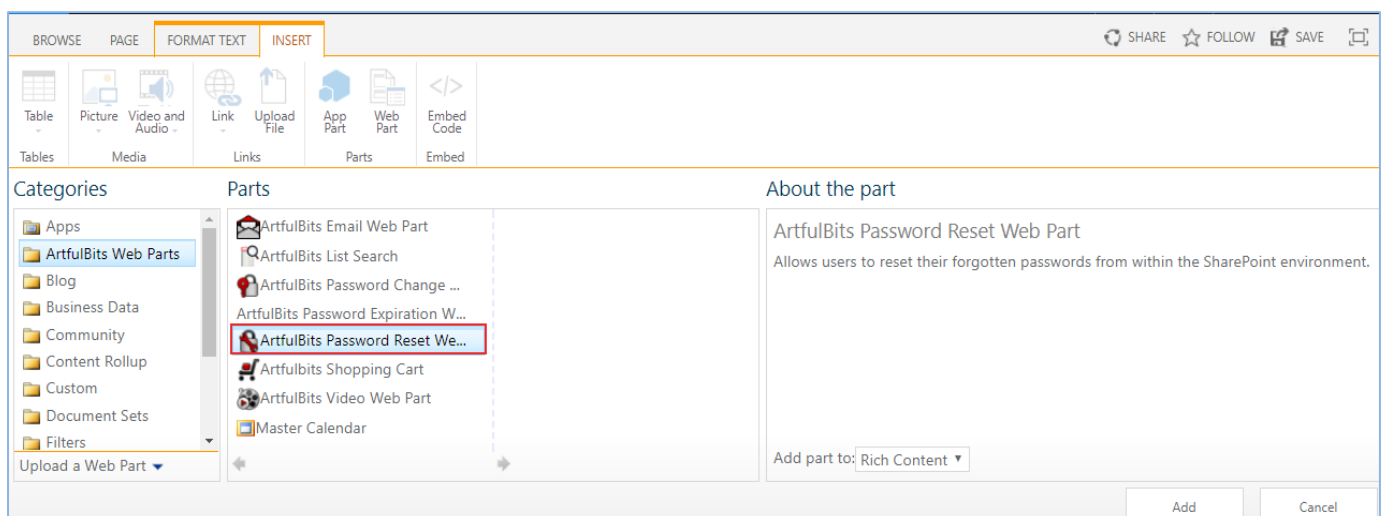
(for example <http://srv01sp2016-2/ layouts/ArtfulBits.WebParts/PasswordReset/PasswordReset.aspx>)



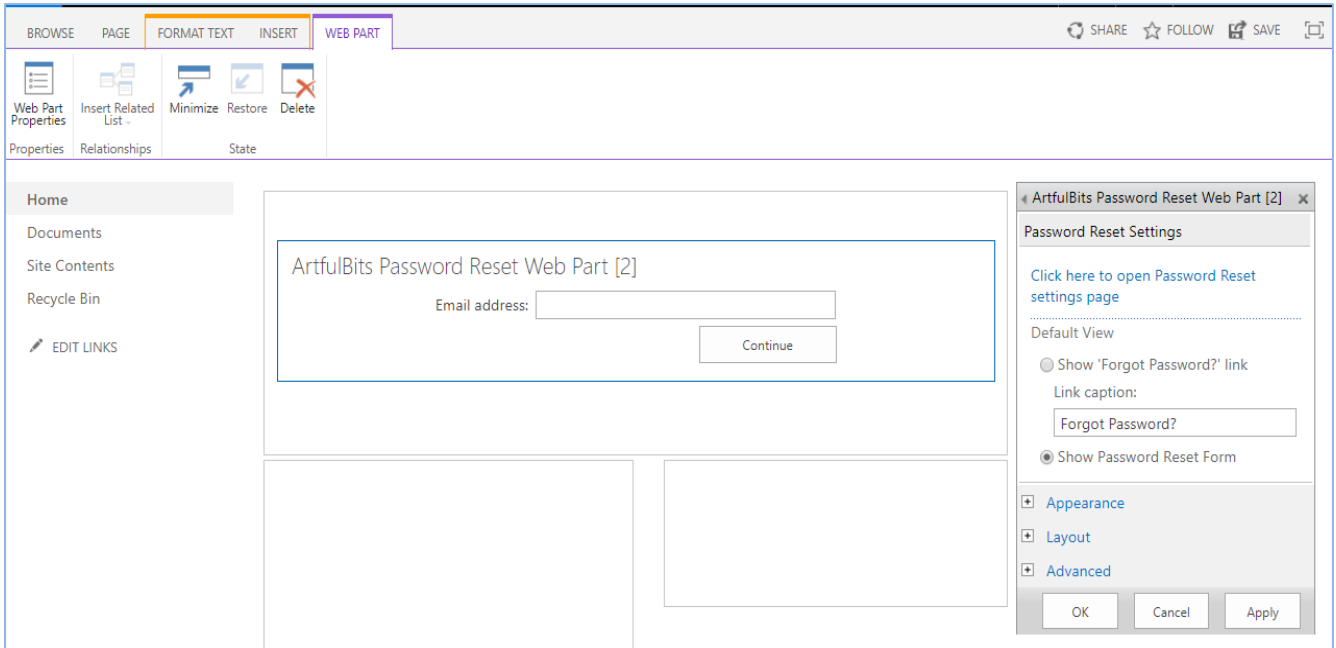
In order to use Password Reset web part in your custom page, you should:

- 1) Enable anonymous access to this page.
- 2) Add Password Reset Web Part to this page:

On Page Edit, click Add a Web Part in the area on the page. Select "ArtfulBits Web Parts" category, select "ArtfulBits Password Reset Web Part" and then click Add.



- 3) Configure Password Reset Web Part:
a) Select "Edit Web Part" from web part menu.



- b) Password Reset Web Part configuration pane is displayed on the right side of the screen. In this pane you can configure custom properties of web part as for standard web part.
- c) In the "Password Reset Settings" section you can specify default view of the web part. It can be "Forgot Password?" link or password reset form.
- d) To specify password reset global settings, you should click "Click here to open Password Reset settings page" link.

Release Notes

Version	Notes
v2.4 (September 10, 2019)	New Features: <ul style="list-style-type: none">• Added SharePoint 2019 support• "Alternative URL" option for replacing default web application URL Improvements: <ul style="list-style-type: none">• Adjusted security and compliance requirements
v2.0 (May 16, 2017)	New Features: <ul style="list-style-type: none">• Added SharePoint 2016 support• Added Dutch and French localization Improvements: <ul style="list-style-type: none">• Added validation check for email (when search user by email) Bugs Fixed: <ul style="list-style-type: none">• Fixed minor issues
v1.1 (February 5, 2013)	New Features: <ul style="list-style-type: none">• Added SharePoint 2013 support• Added German and Russian localization
v1.01 (April 2, 2012)	Bugs Fixed: <ul style="list-style-type: none">• Fixed File Not Found error in Password Reset settings page
v1.0 (February 15, 2012)	Initial Release

See Also



[ArtfulBits Blog](#)

Professional Blog complements and extends SharePoint default functionality with the possibility of adding video or zoomable image and preview, providing tags for the blog entries, supporting the categorization and tags cloud, filtering the entries by category or tag, configurable global settings and many more.



[Cascaded Lookup Column](#)

Cascaded Lookup Column allows building relationship between parent and child columns, the data selected in one field will determine the options presented in another.



[Category Column](#)

Category Column allows tracking, organizing and grouping list items. Outlook 2007 approach for elements categorization, easy indicator color changing and using of advanced tooltip, provide a high professional component style.



[Column Data Adapter](#)

Column Data Adapter is an extension component providing ability to use ArtfulBits Columns in Microsoft Access forms, reports and Microsoft Excel.



[Column Permissions](#)

Column Permissions allows you to manage access to list content on column level. Permissions can be assigned for individual users and for SharePoint groups as well and are effective in forms and list views, as well as in the SharePoint Alerts, RSS, Datasheet and even during exporting to Excel and opening with Access.



[Discussion Column](#)

Need to organize well formatted conversation in the list item without enabling list versioning? Discussion Column is the right choice. Component allows entering rich text with formatting, images, tables, hyperlinks and other features.



[Email Web Part](#)

ArtfulBits Email Web Part allows sending e-mail messages directly from Microsoft SharePoint site. You can notify task assigned users, send gratitude or just send regular e-mail message, etc.



[Follow-Up Column](#)

Follow-Up Column enables due date flags similar to Outlook follow-up functionality. Applying of flags to the list item allows adding of visual reminder in a natural way.



Image Upload Column

Quick and simple way of uploading pictures. Image Upload Column provides with ability to select a picture using file browsing dialog, upload and display it in the list view.



KPI Column

KPI (Key Performance Indicator) Column is simple graphical scorecards that can be used to evaluate business data against business goals. With this column you reduce risk to overlook information about the status of value.



Link to Document Column

Link to Document Column allows referencing files and folders placed at Document Library and provides easy and intuitive way to download files directly from column. Use this column to provide a browsing interface that allows users to browse to an object to link to instead of typing a URL.



Parent Selector Column

Parent Selector Column is used for organizing hierarchical relations in SharePoint list. Picker dialog allows choosing data from large lists. Standard Lookup column can be easily converted to Parent Selector column and vice versa.



Password Change Web Part

Password Change Web Part allows users to change their own passwords from within the SharePoint environment using standard text box interface (current password, new password and confirm new password).



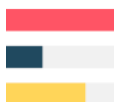
Password Expiration Web Part

Password Expiration Web Part enables Active Directory users to be notified via Web Part interface that their passwords are about to expire. It also automatically sends out email notifications to users before the password expiration date.



Professional Calendar Web Part

Professional Calendar Web Part provides following key benefits: it allows combining events from different SharePoint Lists, from any SharePoint Site, in one Calendar view; allows specifying different color sets for different event sources; supports on-the-fly AJAX-enabled editing features in Outlook like style; and other enhanced functionalities.



Progress Column

Progress Column provides users with the ability to make SharePoint lists more visualized by displaying numerical data on the page sing percentage-based progress bar. Professional progress bar style will make your SharePoint list really modern and stylish.



Shopping Cart Web Part

ArtfulBits Shopping Cart is intended to provide ecommerce functionality. This web part provides a possibility to exhibit items for sale, its basic information, items images, and price, chose the size or other category of item, submit an order and save order in history.



Video

Video Column and Video Web Part are powerful controls made for uploading, managing, linking and playing video files. These controls support variety of video files that can be uploaded from computer, or linked from SharePoint library or streamed from direct URL.

Remarks

Information in this document may be outdated. Please, visit <https://www.sharepoint-artfulbits.com/> for the latest product version.